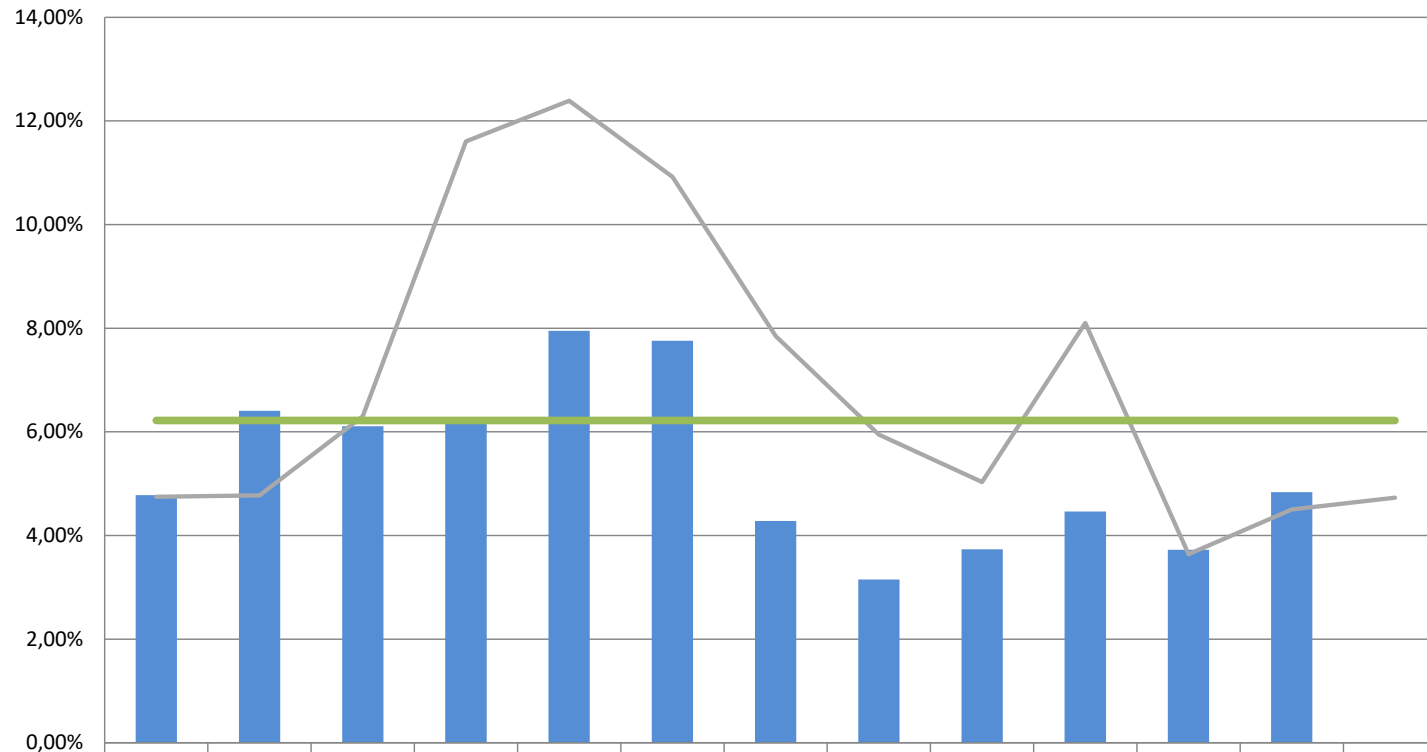
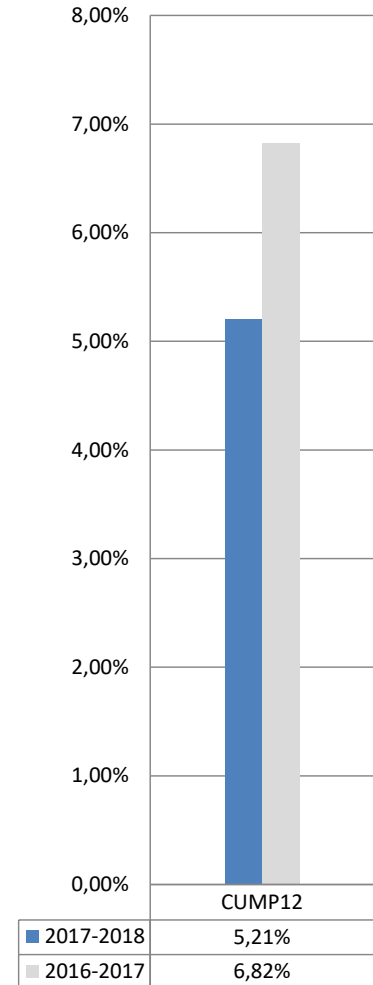


Ratio d'heures d'assurance-salaire DRF

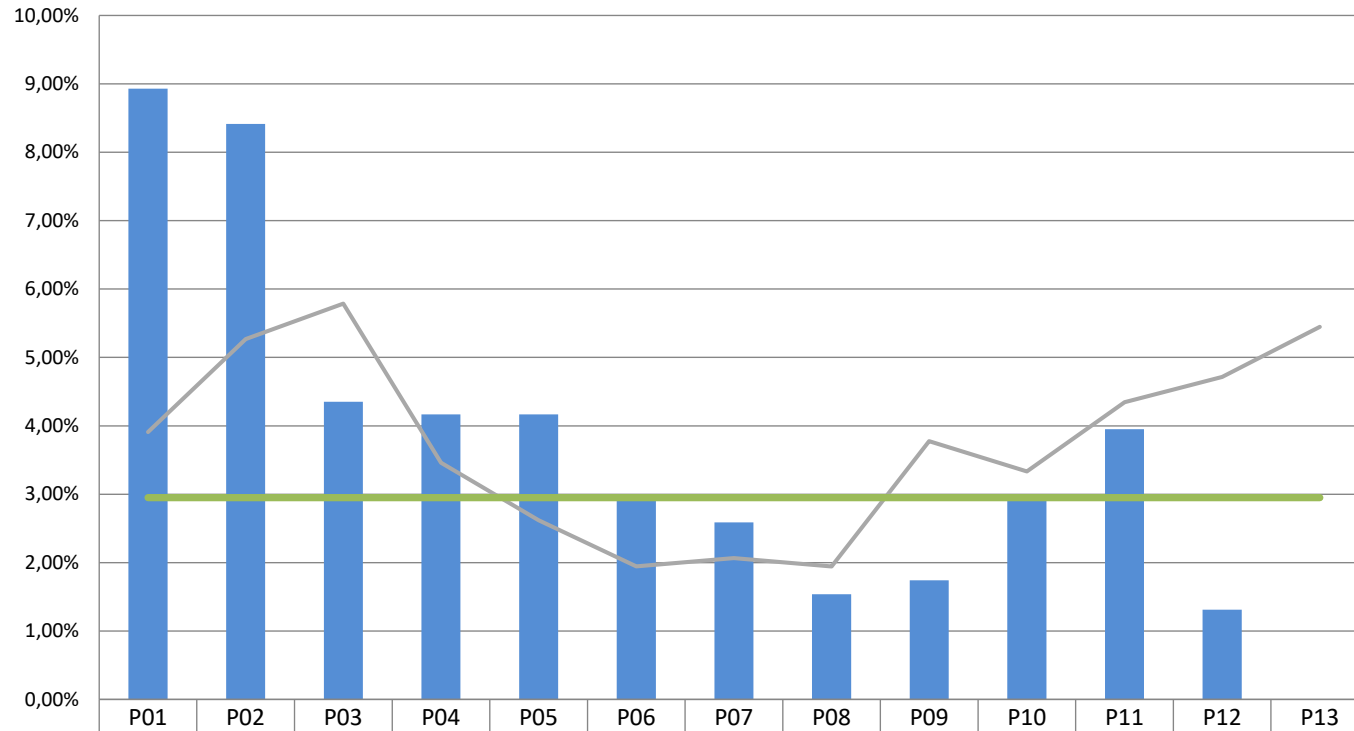


	P01	P02	P03	P04	P05	P06	P07	P08	P09	P10	P11	P12	P13
■ 2017-2018	4,78%	6,41%	6,11%	6,17%	7,95%	7,76%	4,28%	3,15%	3,73%	4,46%	3,72%	4,84%	0,00%
— 2016-2017	4,75%	4,78%	6,30%	11,61%	12,39%	10,92%	7,85%	5,95%	5,03%	8,10%	3,64%	4,50%	4,73%
— Cible	6,22%	6,22%	6,22%	6,22%	6,22%	6,22%	6,22%	6,22%	6,22%	6,22%	6,22%	6,22%	6,22%

Résultat cumulatif

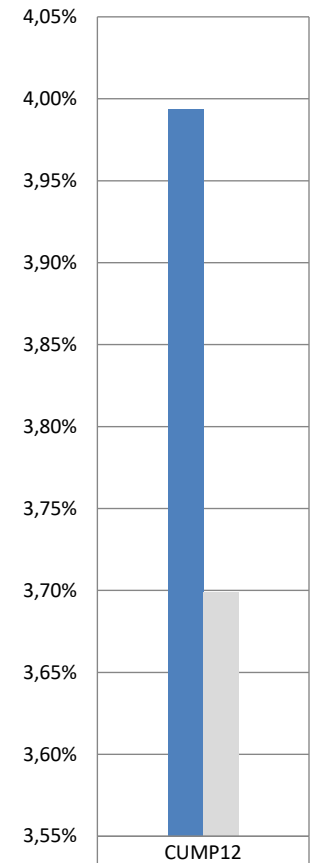


Taux d'heures supplémentaires DRF



2,95%

Résultat cumulatif



■ 2017-2018	3,99%
■ 2016-2017	3,70%