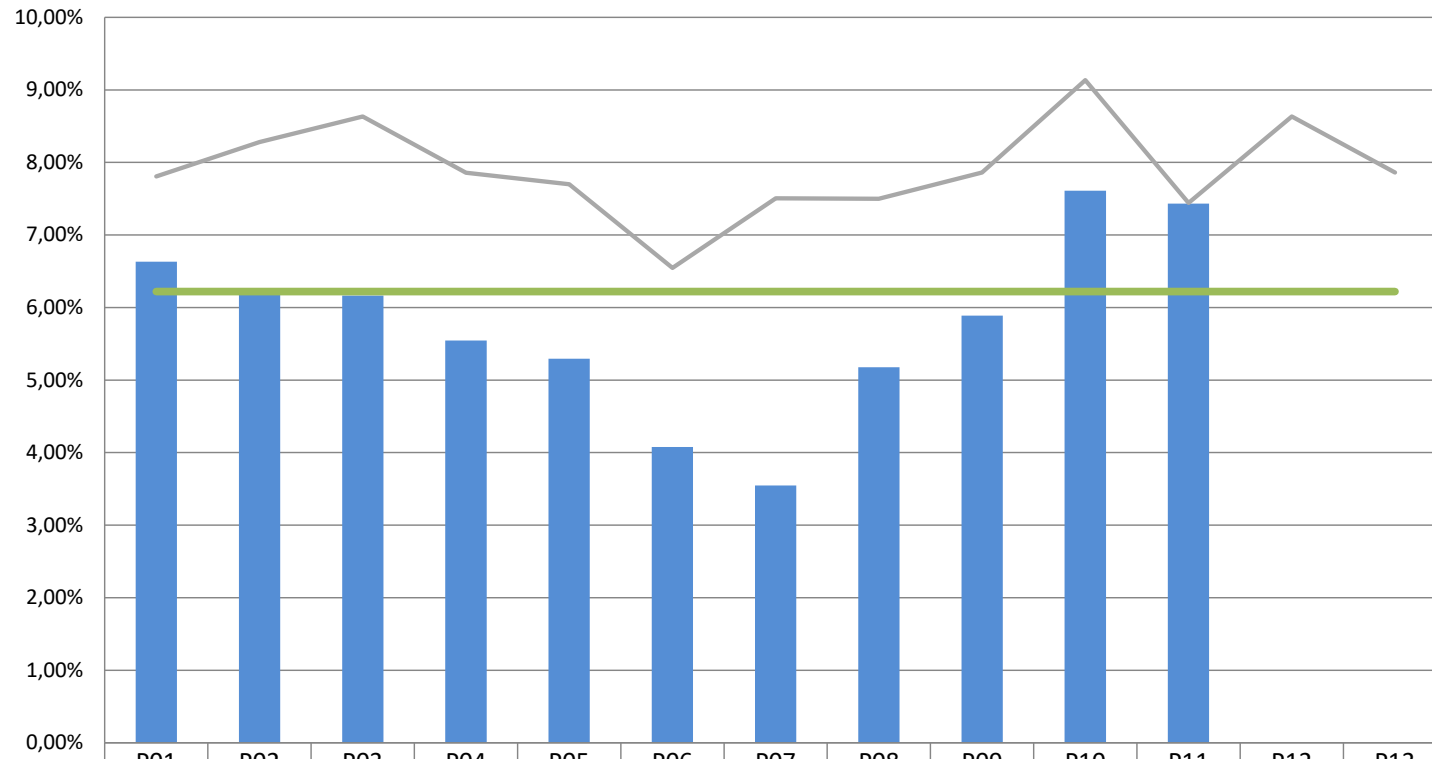
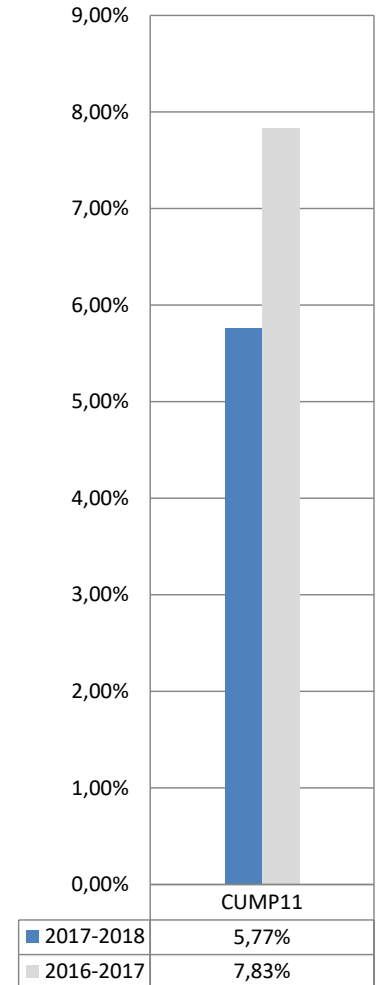


### Ratio d'heures d'assurance-salaire DST

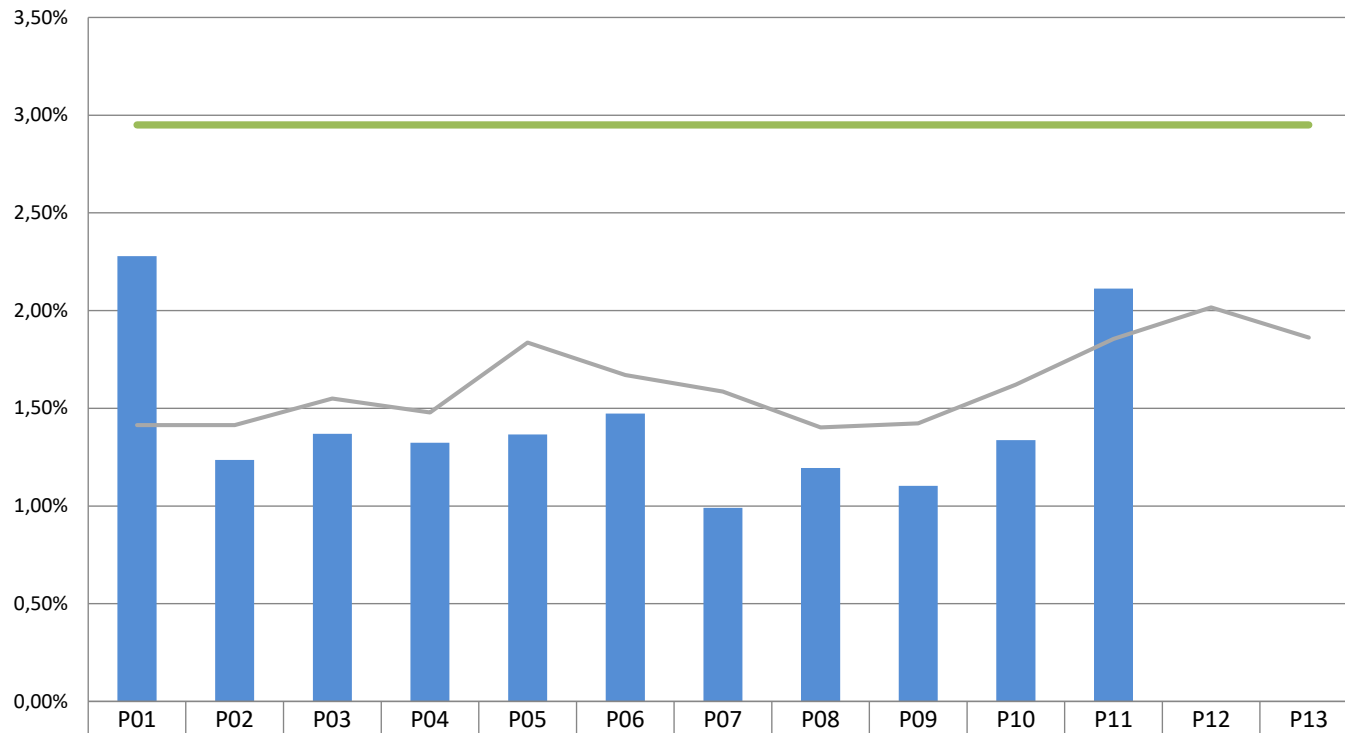


6,22%

### Résultat cumulatif

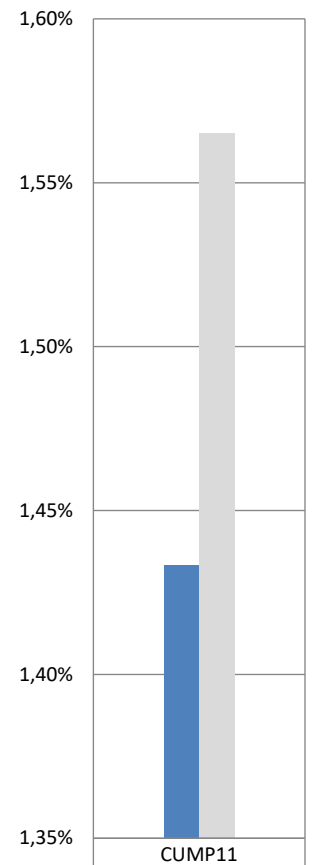


### Taux d'heures supplémentaires DST



	P01	P02	P03	P04	P05	P06	P07	P08	P09	P10	P11	P12	P13
■ 2017-2018	2,28%	1,24%	1,37%	1,32%	1,37%	1,47%	0,99%	1,19%	1,10%	1,34%	2,11%	0,00%	0,00%
— 2016-2017	1,41%	1,41%	1,55%	1,48%	1,84%	1,67%	1,59%	1,40%	1,42%	1,62%	1,86%	2,02%	1,86%
— Cible	2,95%	2,95%	2,95%	2,95%	2,95%	2,95%	2,95%	2,95%	2,95%	2,95%	2,95%	2,95%	2,95%

### Résultat cumulatif



	CUMP11
■ 2017-2018	1,43%
■ 2016-2017	1,56%