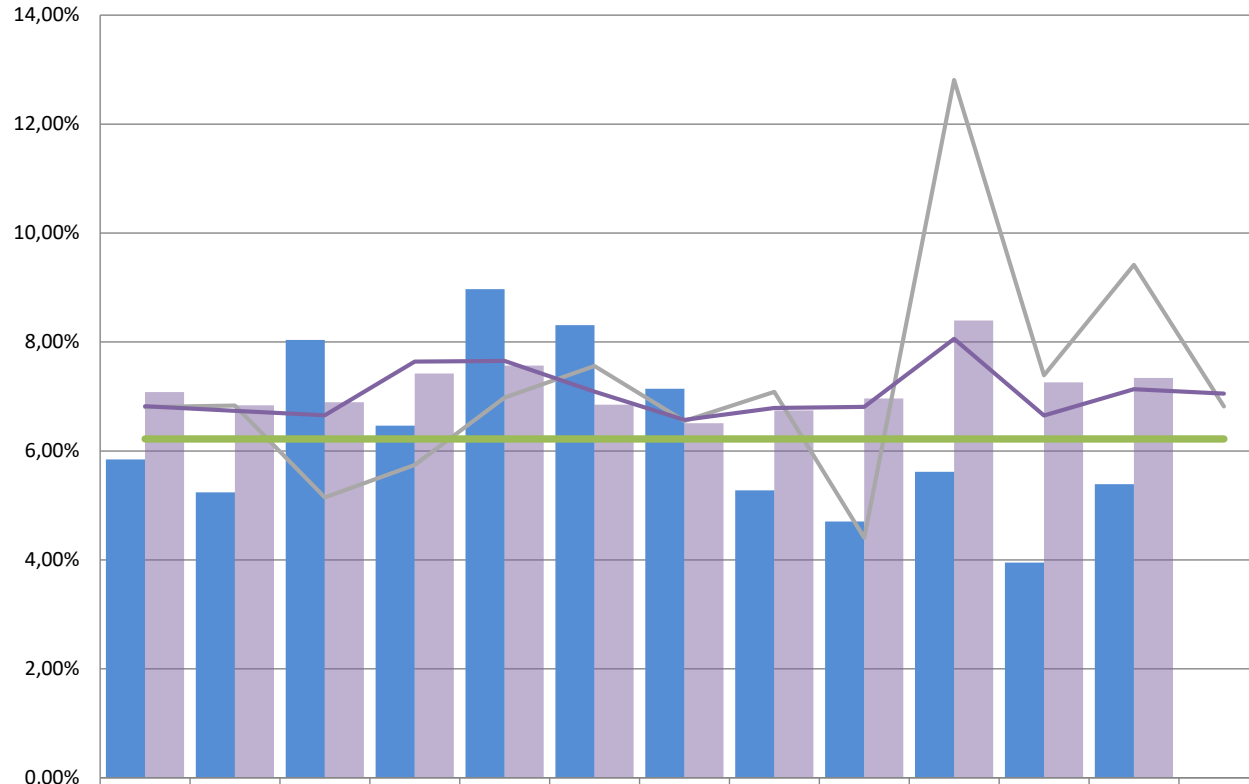
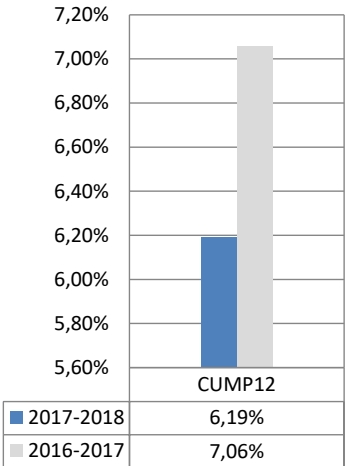


Pourcentage d'heures en assurance-salaire DRHCAJ

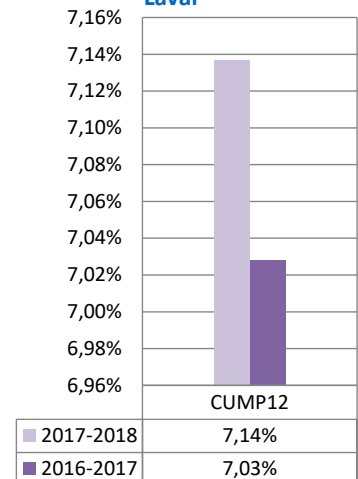


	P01	P02	P03	P04	P05	P06	P07	P08	P09	P10	P11	P12	P13
2017-2018 DRHCAJ	5,84%	5,24%	8,04%	6,47%	8,97%	8,31%	7,14%	5,27%	4,70%	5,61%	3,95%	5,39%	0,00%
2017-2018 CISSS de Laval	7,08%	6,84%	6,89%	7,42%	7,57%	6,85%	6,51%	6,74%	6,96%	8,39%	7,26%	7,34%	0,00%
2016-2017 DRHCAJ	6,80%	6,84%	5,15%	5,74%	6,98%	7,56%	6,55%	7,09%	4,41%	12,81%	7,39%	9,42%	6,82%
2016-2017 CISSS de Laval	6,82%	6,74%	6,65%	7,64%	7,65%	7,09%	6,57%	6,79%	6,81%	8,06%	6,65%	7,13%	7,05%
Cible	6,22%	6,22%	6,22%	6,22%	6,22%	6,22%	6,22%	6,22%	6,22%	6,22%	6,22%	6,22%	6,22%

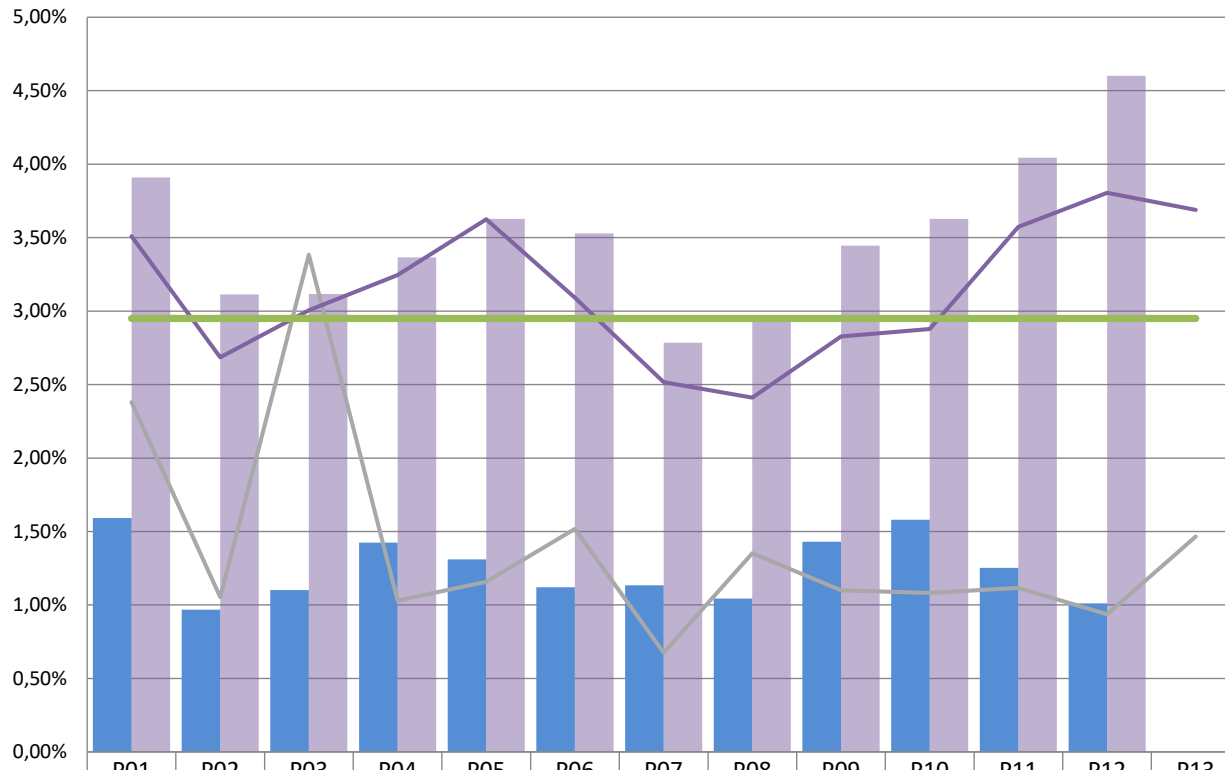
Résultat cumulatif DRHCAJ



Résultat cumulatif CISSS de Laval



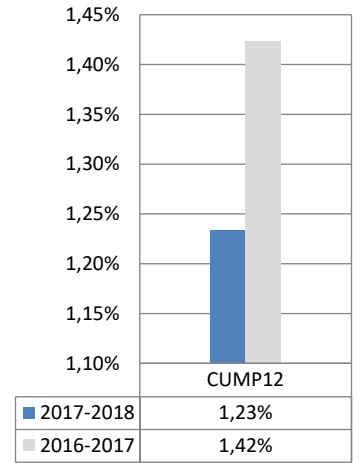
Taux d'heures supplémentaires DRHCAJ



2,95%

	P01	P02	P03	P04	P05	P06	P07	P08	P09	P10	P11	P12	P13
2017-2018 DRHCAJ	1,59%	0,97%	1,10%	1,42%	1,31%	1,12%	1,13%	1,04%	1,43%	1,58%	1,25%	1,01%	0,00%
2017-2018 CISSS de Laval	3,91%	3,11%	3,12%	3,37%	3,63%	3,53%	2,79%	2,93%	3,45%	3,63%	4,04%	4,60%	0,00%
2016-2017 DRHCAJ	2,38%	1,05%	3,38%	1,03%	1,16%	1,52%	0,68%	1,35%	1,10%	1,08%	1,12%	0,94%	1,47%
2016-2017 CISSS de Laval	3,51%	2,69%	3,01%	3,24%	3,62%	3,09%	2,52%	2,41%	2,83%	2,88%	3,57%	3,81%	3,69%
Cible	2,95%	2,95%	2,95%	2,95%	2,95%	2,95%	2,95%	2,95%	2,95%	2,95%	2,95%	2,95%	2,95%

Résultat cumulatif DRHCAJ



Résultat cumulatif CISSS de Laval

